



# UNITY WITH YOUR SUPPORT ORGS

THE PANDEMIC YEAR  
at FALL SCASBO

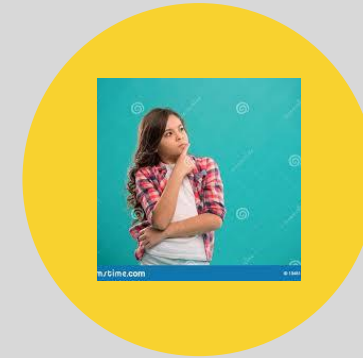
# UNITY WITH YOUR SUPPORT ORGS



THE FACTS



THE CHALLENGES



THE CONSIDERATIONS



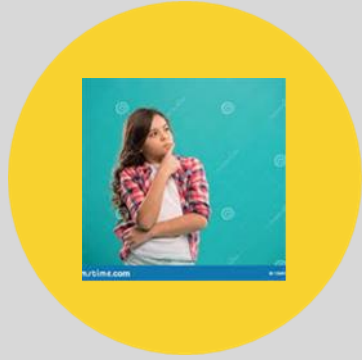
# THE FACTS

- Support Orgs are separate legal entities
- PTAs have state and national help, while PTOs and Booster Clubs do not
- Many support orgs are well intentioned, but don't have the skills, knowledge and experience to operate efficiently and effectively
- However, District and school staff rarely have the time to provide the needed guidance



# THE CHALLENGES

- Providing help and support without being too involved
- Asking adherence to requirements and guidelines while still giving them independence
- Ultimately maybe needing to decide whether to allow or disallow certain support organizations to continue to operate
- Even though they are legally separate, the public sees them as part of the school



# THE CONSIDERATIONS

- Providing help and support without being too involved
- Have you established written expectations for your support organizations?
- Do you provide periodic training for support organization officers?
- Do you simply remind them periodically that you appreciate them and are glad to talk with them when they have questions or issues, and help them however you reasonably can?